

Correspondence

Scott Albrecht | Mary Iverson

Exhibition Catalogue

Andenken Gallery - November 11, 2017

Scott Albrecht and Mary Iverson are two American artists.

I've worked with Scott on solo exhibitions and both he and Mary are involved in our travelling group exhibition , 'Direction / Instruction'.

I've interviewed both artists separately, Scott for Hi-Fructose, and Mary for Amadeus Magazine.

This exhibition marks a happy occasion for me as now I have the true honour to host new work from both artists in our new location in an old anatomy building in Oosterpark in Amsterdam. The setting is a stellar match for the work .

Scott's work is very cleverly text based. We have 7 new slogans from him in his signature wood craft style. His wonderful little free standing 'Offering' pieces are not text based...they are quiet clearly abstract representation of flowers.

For Mary, I firmly believe her work is some of the most on time and on target commentary on our consumer culture. Her ongoing mediations on the global supply chain are wonderful. We are very lucky to have the first three Amsterdam / Dutch based collage landscapes as well as 3 wonderful new oil paintings. Also included in this catalogue are some excellent colour studies.

I'm very excited to host this show. Andenken has been involved in some very cool projects lately for sure, but this exhibition is a moment to bring new work to the public from two important artists. That's a joy for me as a curator.

The exhibition reception is open to the public

Saturday November 11th, 2017
Mauritskade 61, Amsterdam
6-10pm

Contact:
Hyland Mather
hydeyhodey@gmail.com
+31 (0) 62 915 1752

www.andenken.com
instagram: @andenken

andenken

Scott Albrecht

American (b. 1983)

A little excerpt from my interview with Scott for his monogram on Valley Cruise Press.

I like this quote from him about finding his way as an art maker. It feels youthful, committed and strong

‘Early on in my program, I started to realize the balance of creativity and clients in the graphic design world, and was struggling with it. I didn’t love the idea of only doing projects for other people so I started making work and projects for myself which was heavily influenced by my design interests but I started going back to more tangible, traditional forms of art. It helped me come to an understanding that you need to make the work you want to make for yourself and not wait for it or be at the mercy of projects and clients. That ultimately pushed me back into art.’

Scott’s recent success with his solo show ‘New Translations’ at Shepard Fairey’s Subliminal Project’s gallery is further evidence that he’s on a great path as a maker

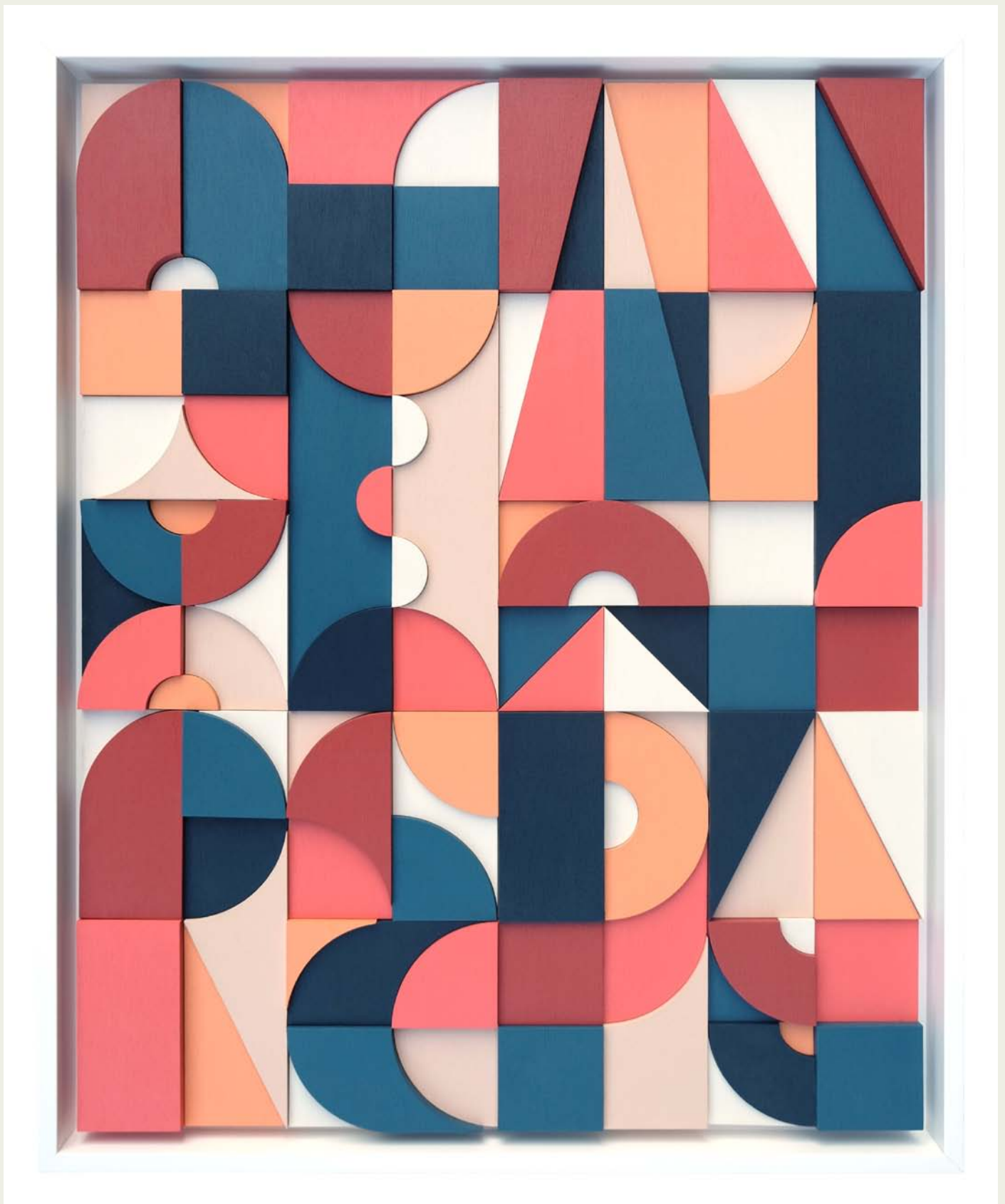
Bio:

Scott Albrecht was born in 1983 in New Brunswick, NJ, and raised in Bethlehem Township, NJ. In 2003, he received a degree in Graphic Design from The Art Institute of Philadelphia. Scott is currently based in Brooklyn, NY and a member of The Gowanus Studio Space.

His work incorporates elements of woodworking, hand-drawn typography, geometric collage using vintage printed ephemera and found objects.

instagram: @scottyfivealive





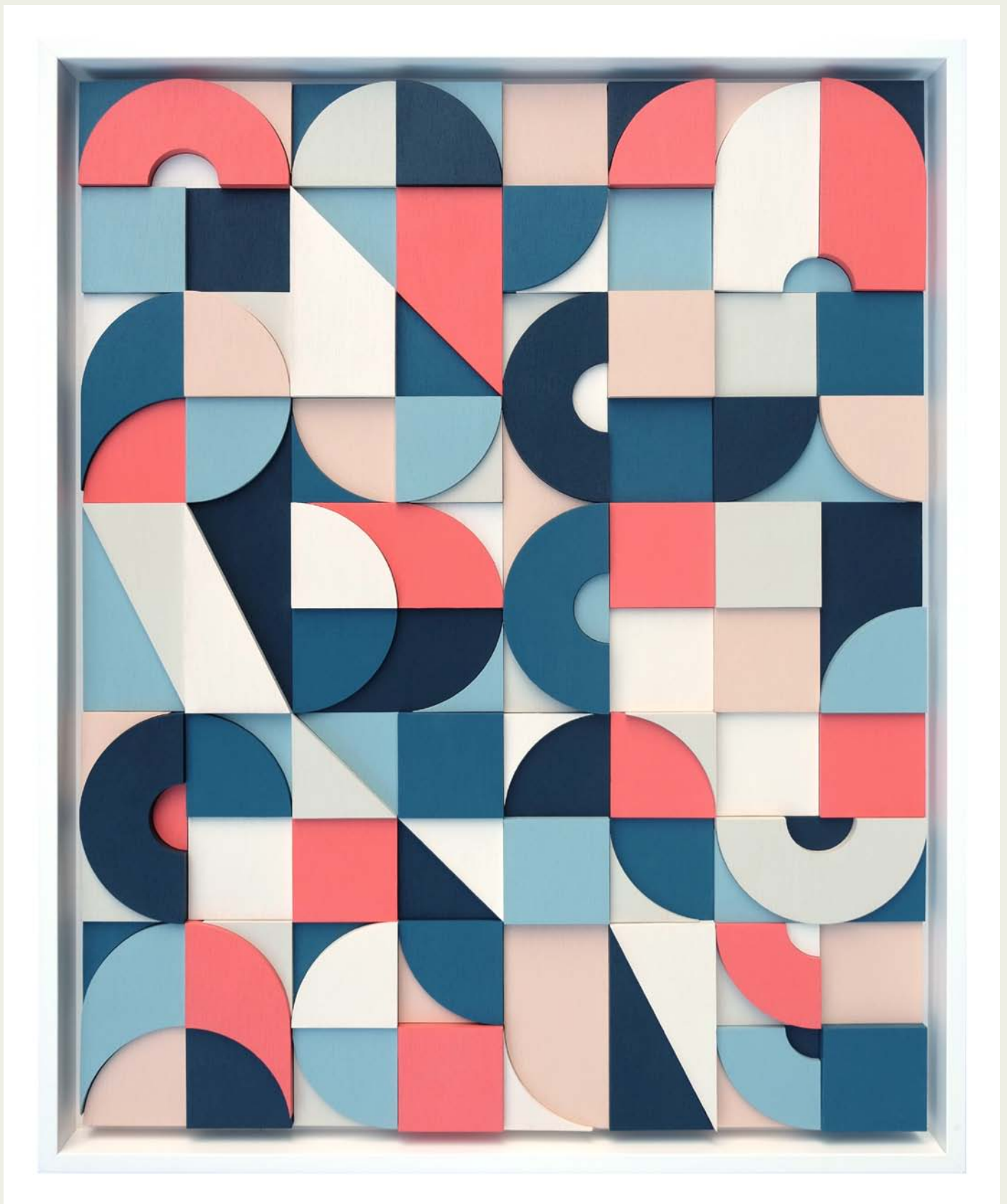
A Familiar Space

acrylic on wood 16.5" x 20" (42cm x 51cm)

2017

signed on reverse in marker

\$2,550 | €2175 | £1940



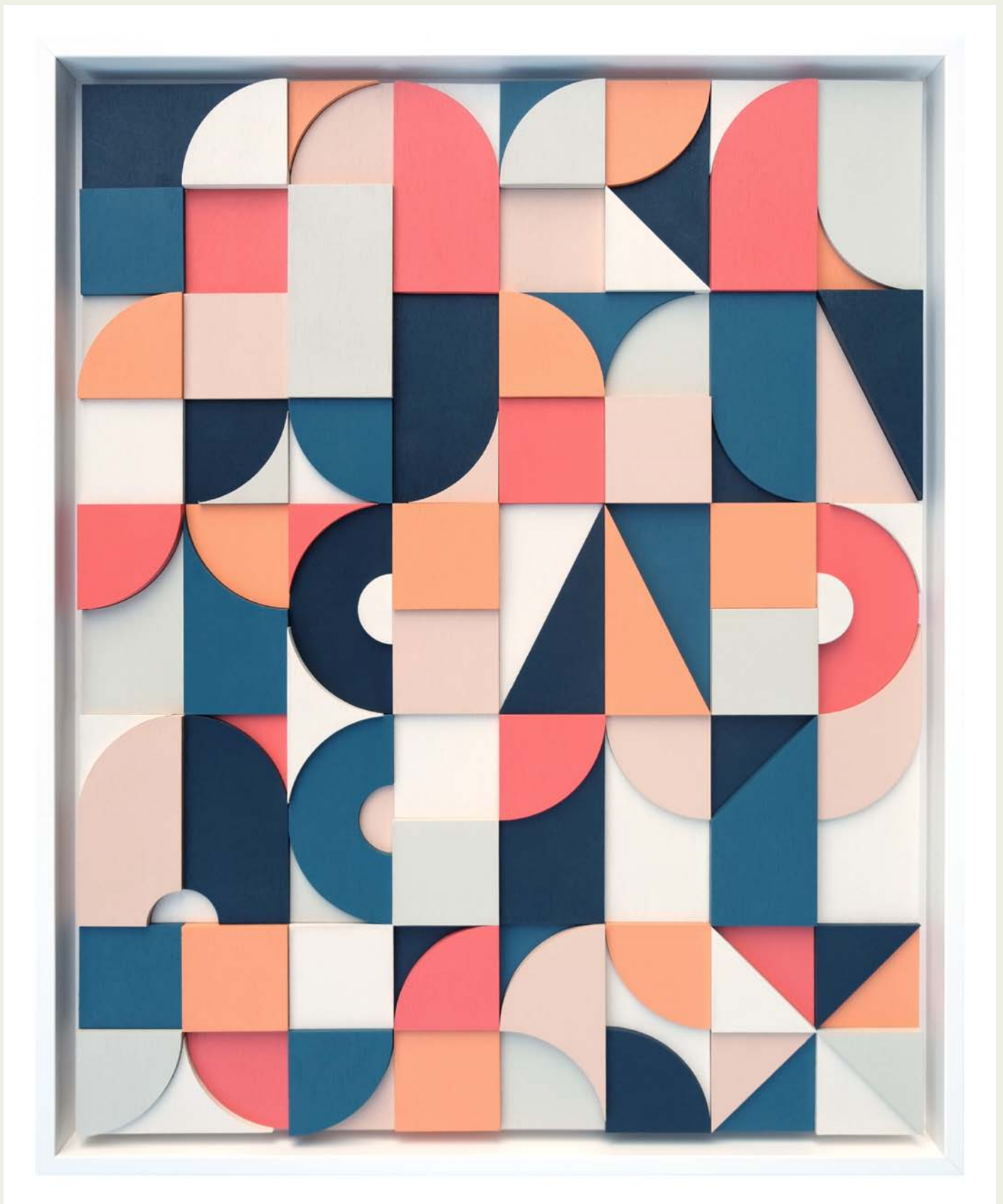
A Shared Language

acrylic on wood 16.5" x 20" (42cm x 51cm)

2017

signed on reverse in marker

\$2,550 | €2175 | £1940



Forgotten Paths

acrylic on wood 16.5" x 20" (42cm x 51cm)

2017

signed on reverse in marker

\$2,550 | €2175 | £1940



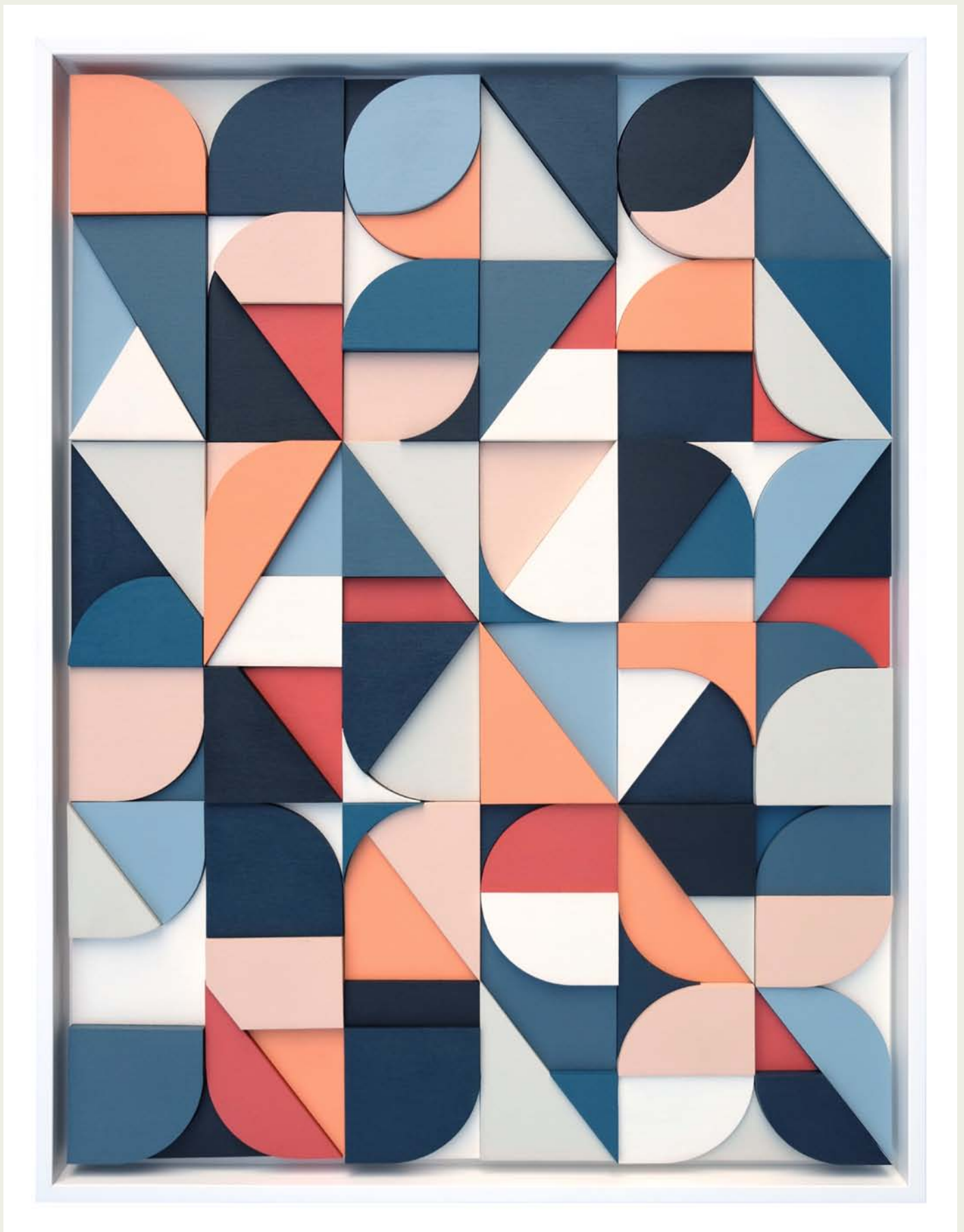
Hidden Mountains

acrylic on wood 16.5" x 20" (42cm x 51cm)

2017

signed on reverse in marker

\$2,550 | €2175 | £1940



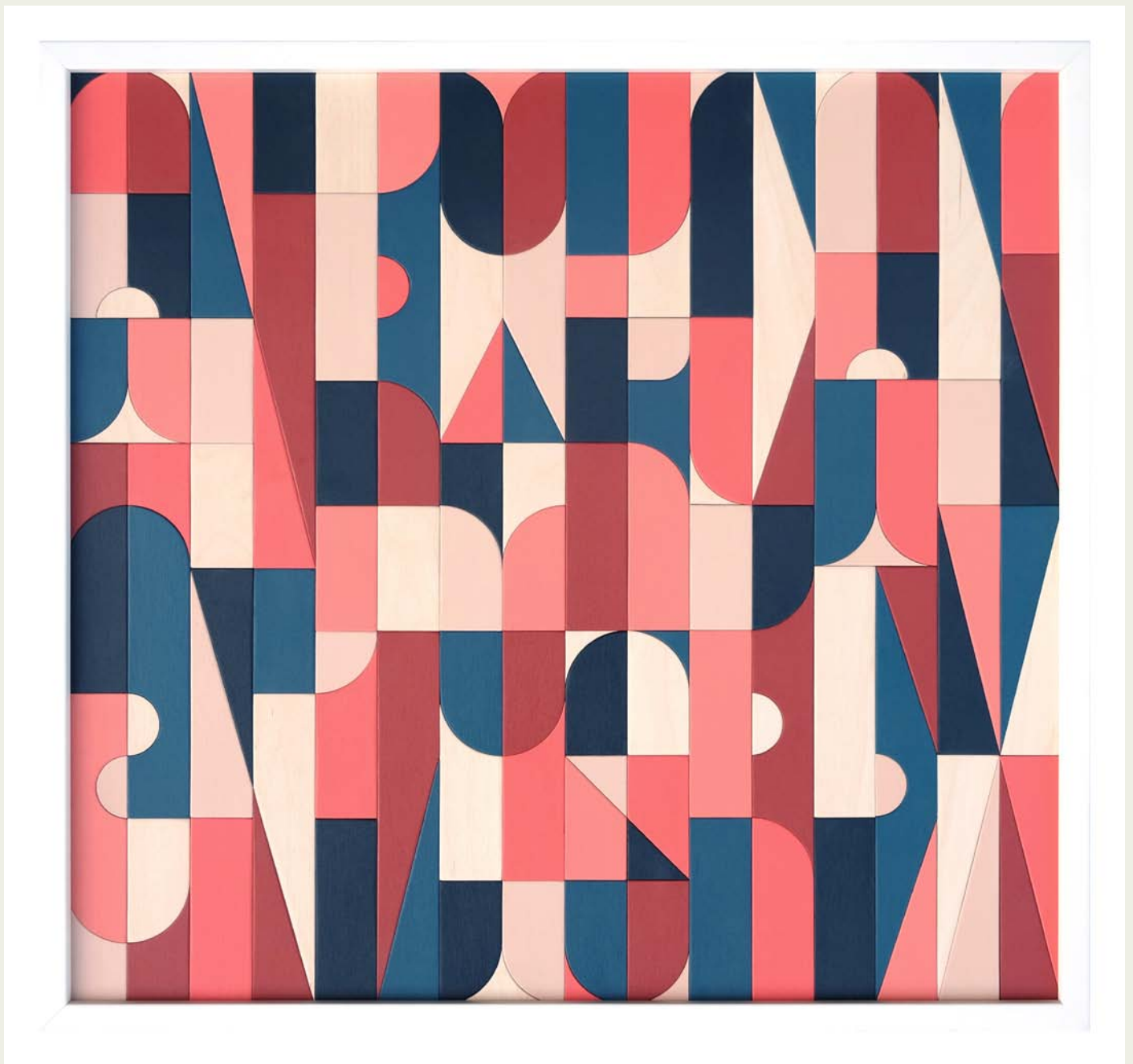
Thinking Feeling

acrylic on wood 18" x 23.25" (45.5cm x 59cm)

2017

signed on reverse in marker

\$3000 | €2560 | £2275



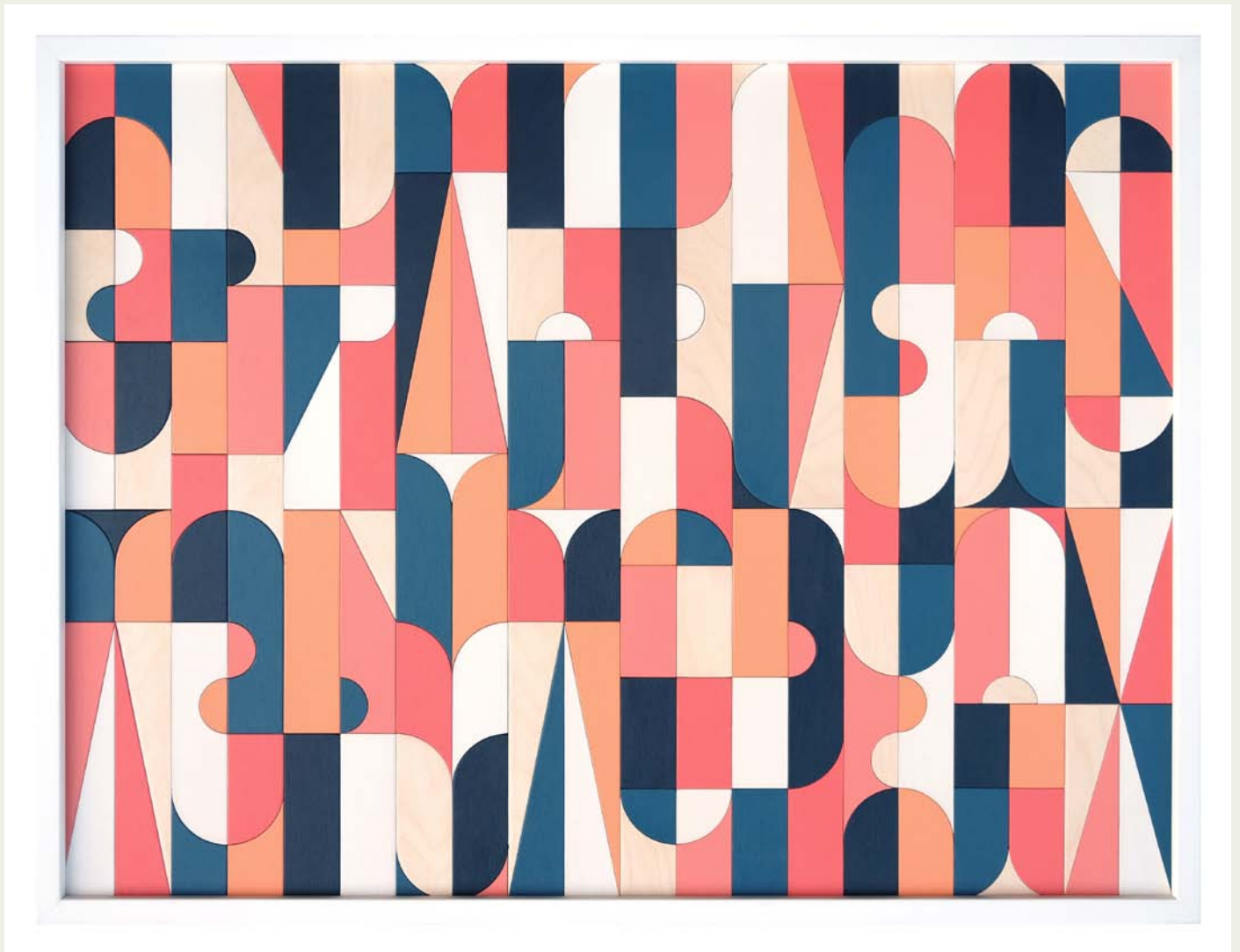
An Eye Can Only See

acrylic on wood 24.8" x 23" (63cm x 58.5cm)

2017

signed on reverse in marker

\$2,550 | €2175 | £1940



OFF THE COAST OF UTOPIA

acrylic on wood 31" x 23.25" (78cm x 59cm)

2017

signed on reverse in marker

\$2,550 | €2175 | £1940



OFFERING (1)

acrylic on wood, hand-painted multiple, open edition

2017

initials on reverse in pencil

\$370 | €315 | £280



Offering 02

acrylic on wood, hand-painted multiple, open edition

2017

initials on reverse in pencil

\$370 | €315 | £280



Offering 03

acrylic on wood, hand-painted multiple, open edition

2017

initials on reverse in pencil

\$370 | €315 | £280

Mary Iverson

A while back I interviewed Mary Iverson for Amadeus magazine.

I like this quote from her . “Yes, I am intentionally squaring off with the existential issues of our time. In following my interests and working to resolve an artistic dichotomy within myself, between my love and nature and my fascination with the shipping industry, I came upon a visual solution that metaphorically echoes what we are facing in the world today. But I didn’t arrive there by directly seeking to have a political message. My work simply reflects my interests and is an expression of my political concerns”

There is little wonder that there is no shortage of accolades for Mary’s work.

“Mary Iverson is an exquisite landscape painter with a razor-sharp contemporary edge. On the surface, we see activism, her collages and paintings warning us of a dystopic future existence. But the truth is, this apocalypse is happening now. Through her paintings of rogue shipping containers invading precious, untouched vistas, she uncovers the gross excess and collateral damages of the shipping industry, and ultimately, commercialism.”

-Kristin Farr, Juxtapoz Magazine, August 2015

“In Moscow (2013), the gilt onion domes of the city peek out from the rising water, buffeted on all sides by a bevy of buoyant boxes—whose colorful, candy-toned appearance is about as unexpected as Putin sauntering the city streets in clown shoes, making for work that is both visually arresting and shockingly effective.”

-Suzanne Beal, Art Ltd Magazine, November 2013

instagram: @themaryiverson





Shipwreck, Mount Rainier National Park

oil on canvas, 30" x 30" (76cm x 76cm)

2017

signed on the side of the canvas and on back of the panel.

\$4375 | €3750 | £3300



Shipwreck, Yosemite National Park

oil on canvas, 30" x 30" (76cm x 76cm)

2017

signed on the side of the canvas and on back of the panel.

\$4375 | €3750 | £3300



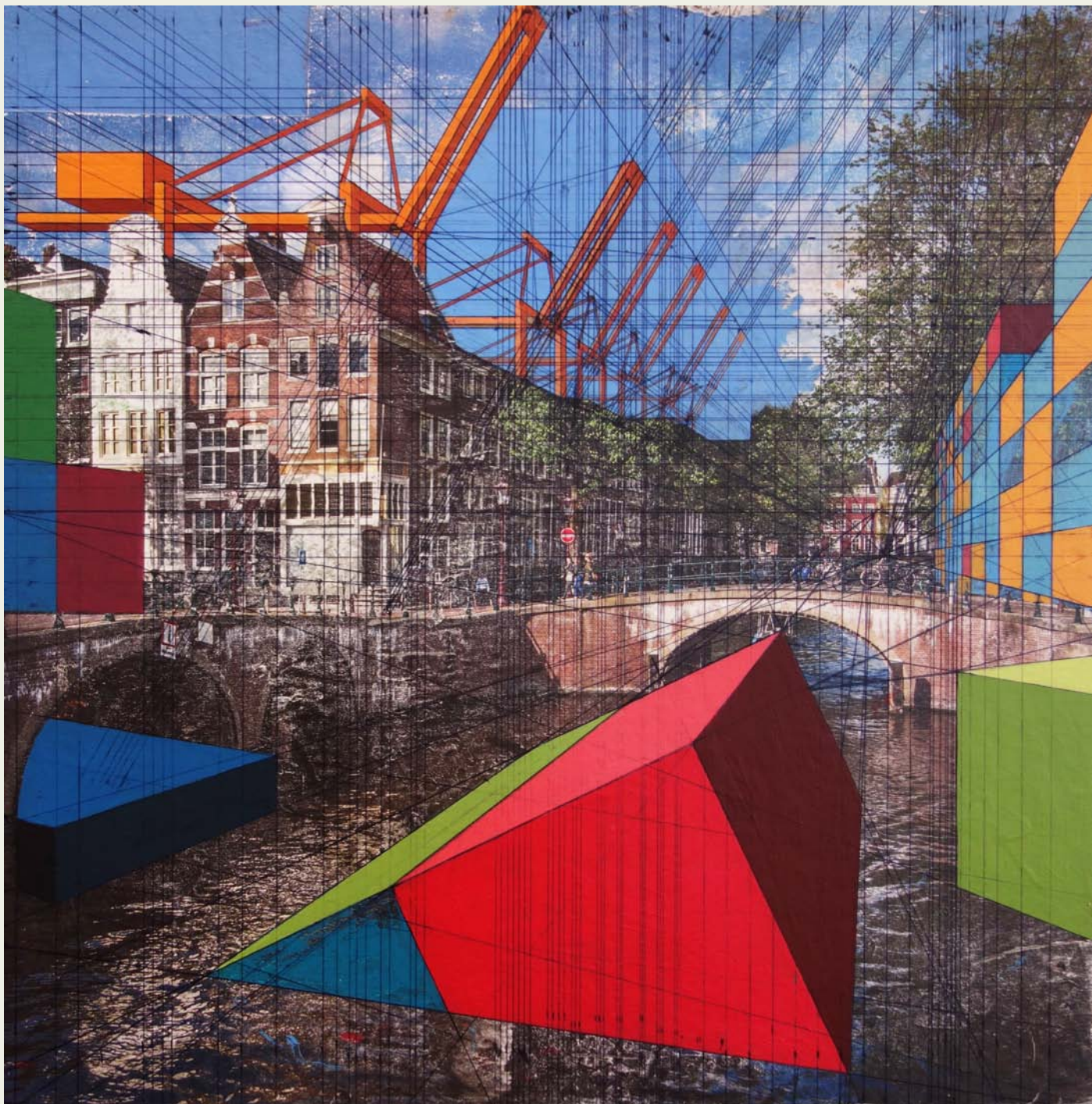
Summer Triangle, Crater Lake National Park

oil on canvas, 30" x 30" (76cm x 76cm)

2017

signed on the side of the canvas and on back of the panel.

\$4375 | €3750 | £3300



Amsterdam,

acrylic, ink, found photograph on panel, 12" x 12" (30.5cm x 30.5cm)

2017

signed on the front on the image, and on back of the panel

\$1200 | €1050 | £910



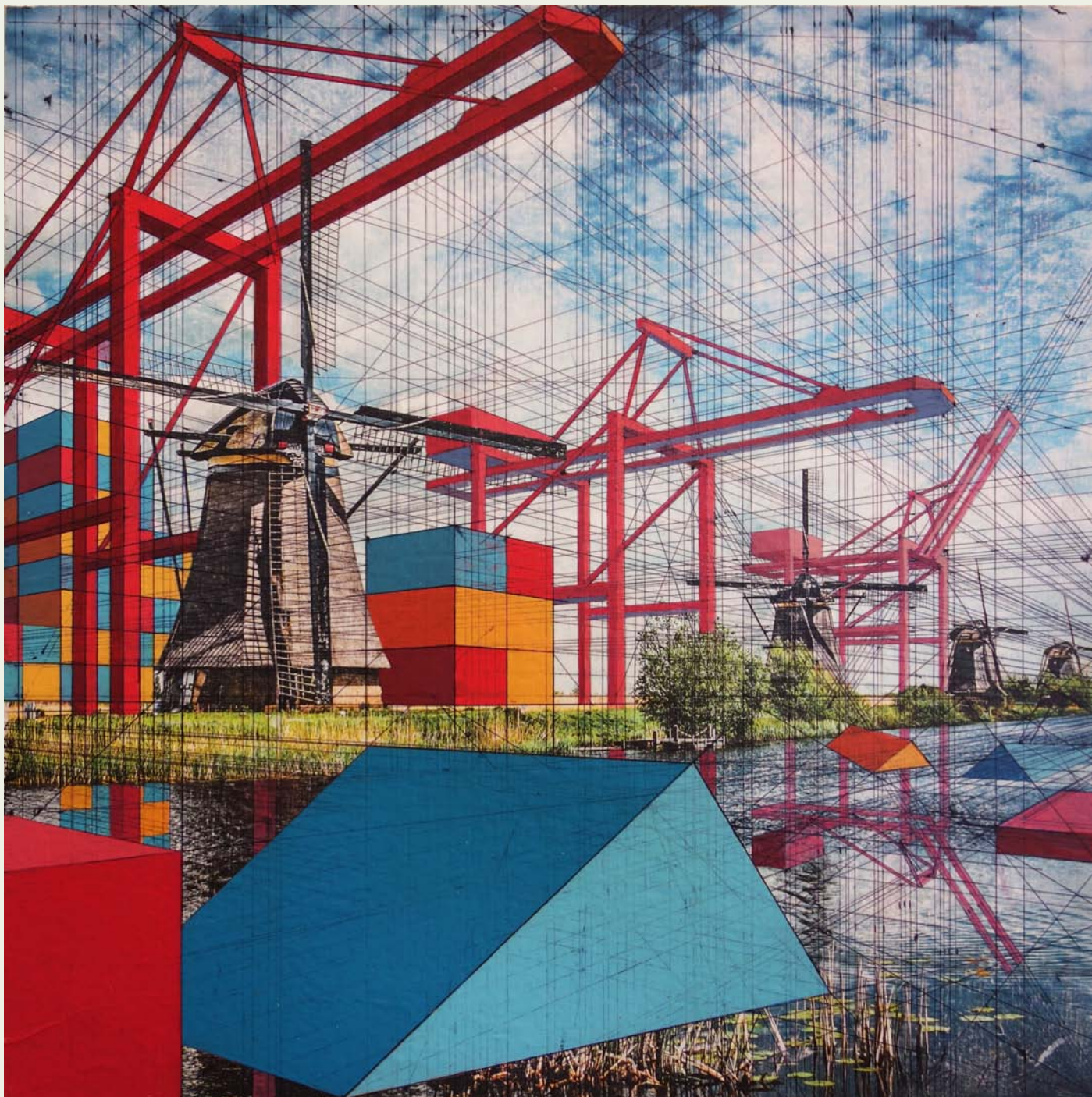
Fort Bourtange

acrylic, ink, found photograph on panel, 12" x 12" (30.5cm x 30.5cm)

2017

signed on the front on the image, and on back of the panel

\$1200 | €1050 | £910



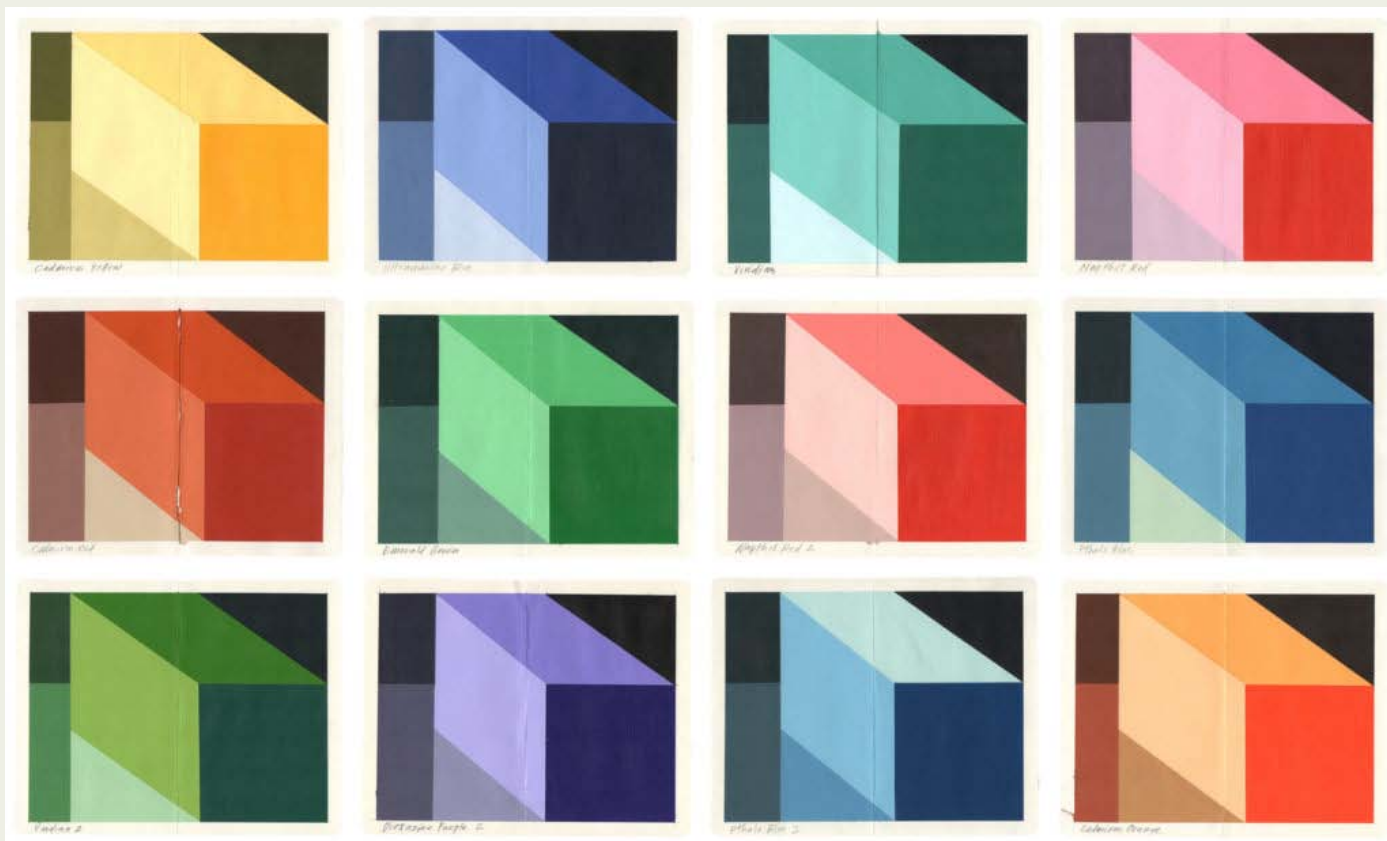
Windmills

acrylic, ink, found photograph on panel, 12" x 12" (30.5cm x 30.5cm)

2017

signed on the front on the image, and on back of the panel

\$1200 | €1050 | £910



Color Study Series:

Grid of 12 of Mary's colour study pieces

32 x 52 1/2 in

81.3 x 133.4 cm

Acrylic and graphite on paper.

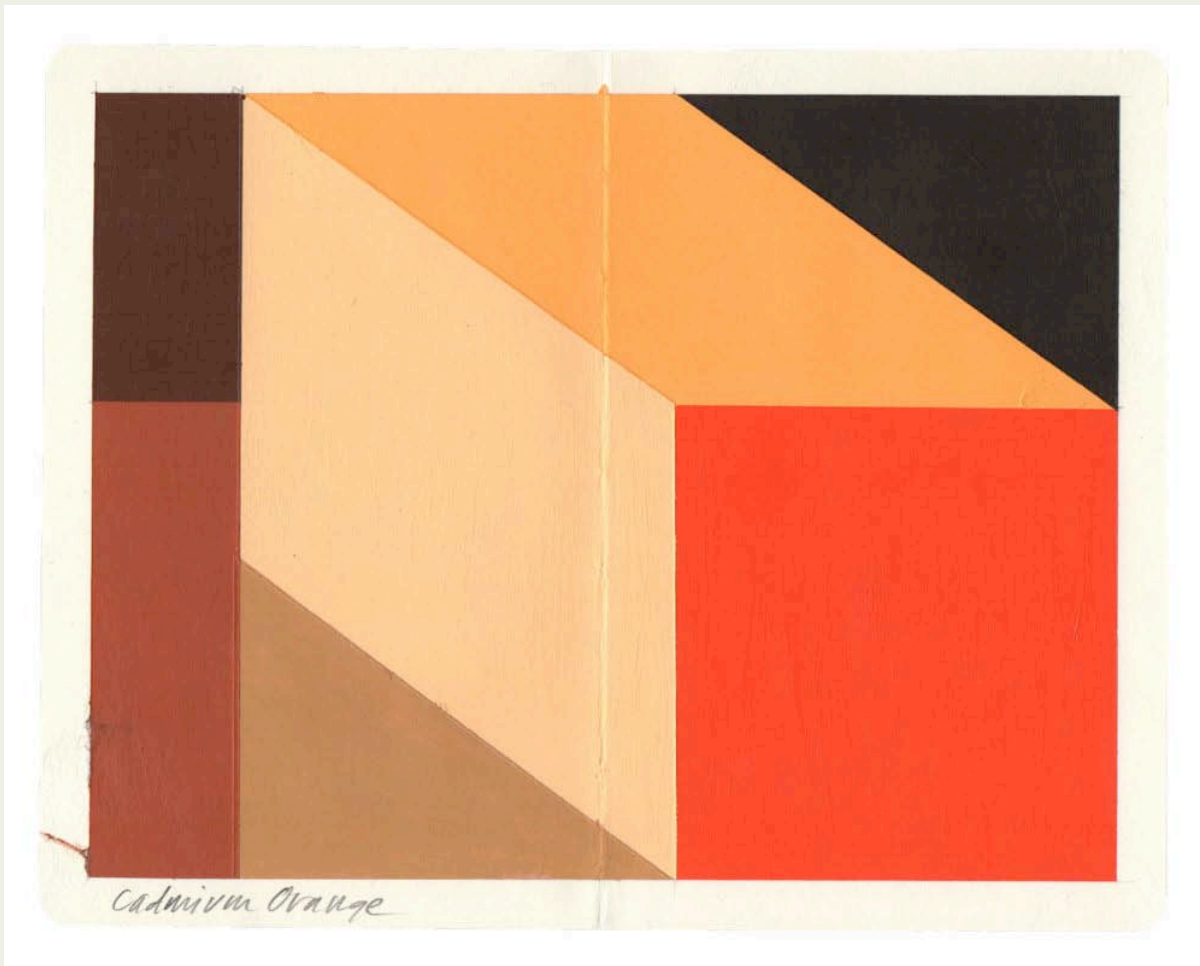
Each individual piece is nicely framed in a white wood frame

Each piece shares some common description details:

acrylic and graphite on paper,

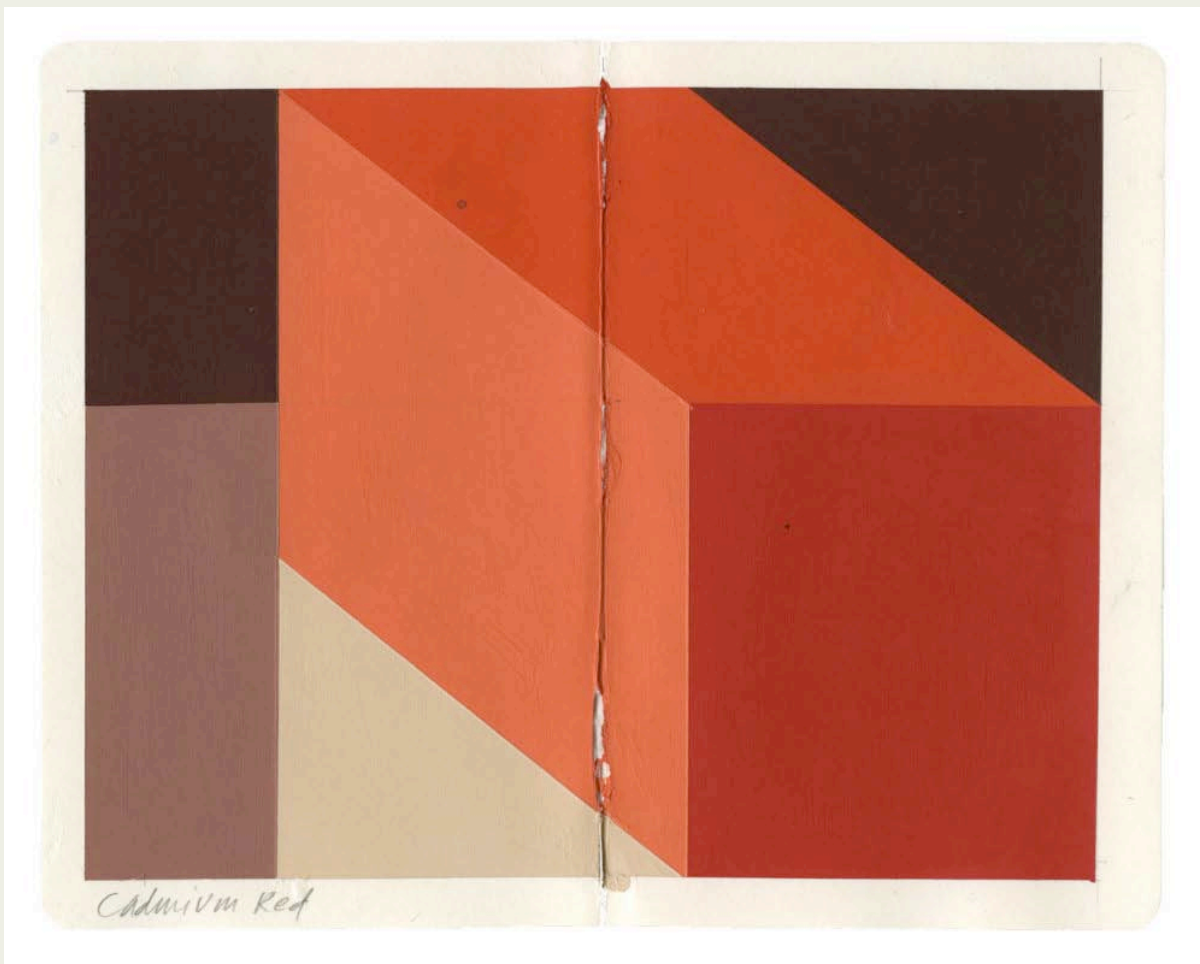
5.5" x 7", framed 8" x 10" (14cm x 18cm framed 20.5cm x 25.5cm)

signed on the back of the artwork.



Color Study, Cadmium Orange

\$350 | €300 | £265



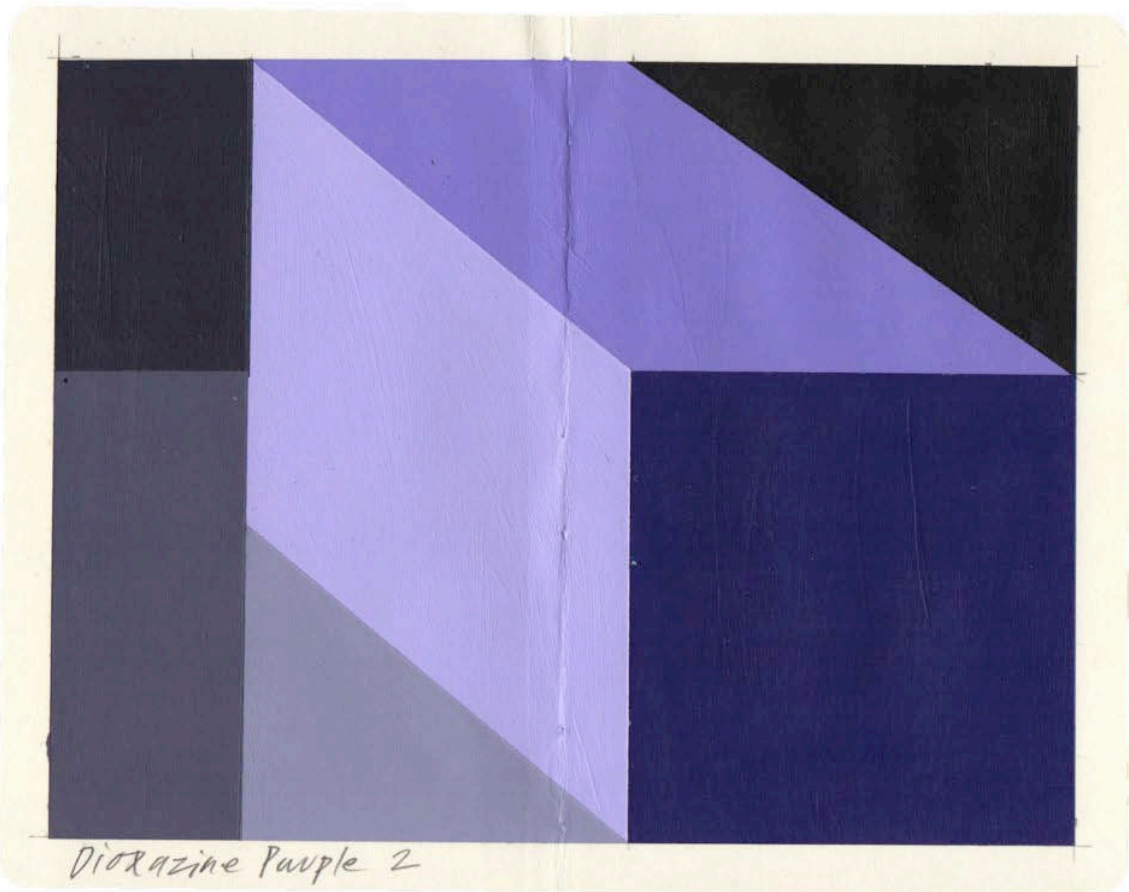
Color Study, Cadmium Red

\$350 | €300 | £265



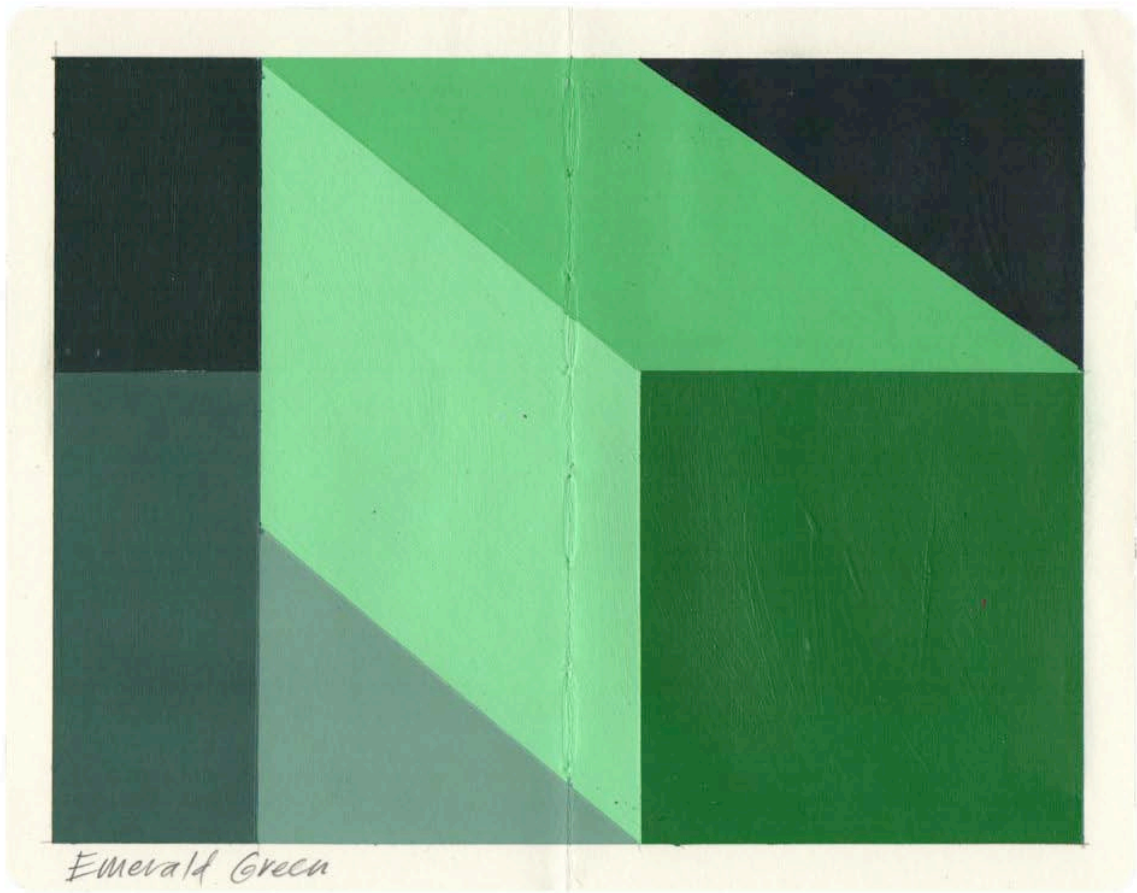
Color Study, Cadmium Yellow

\$350 | €300 | £265



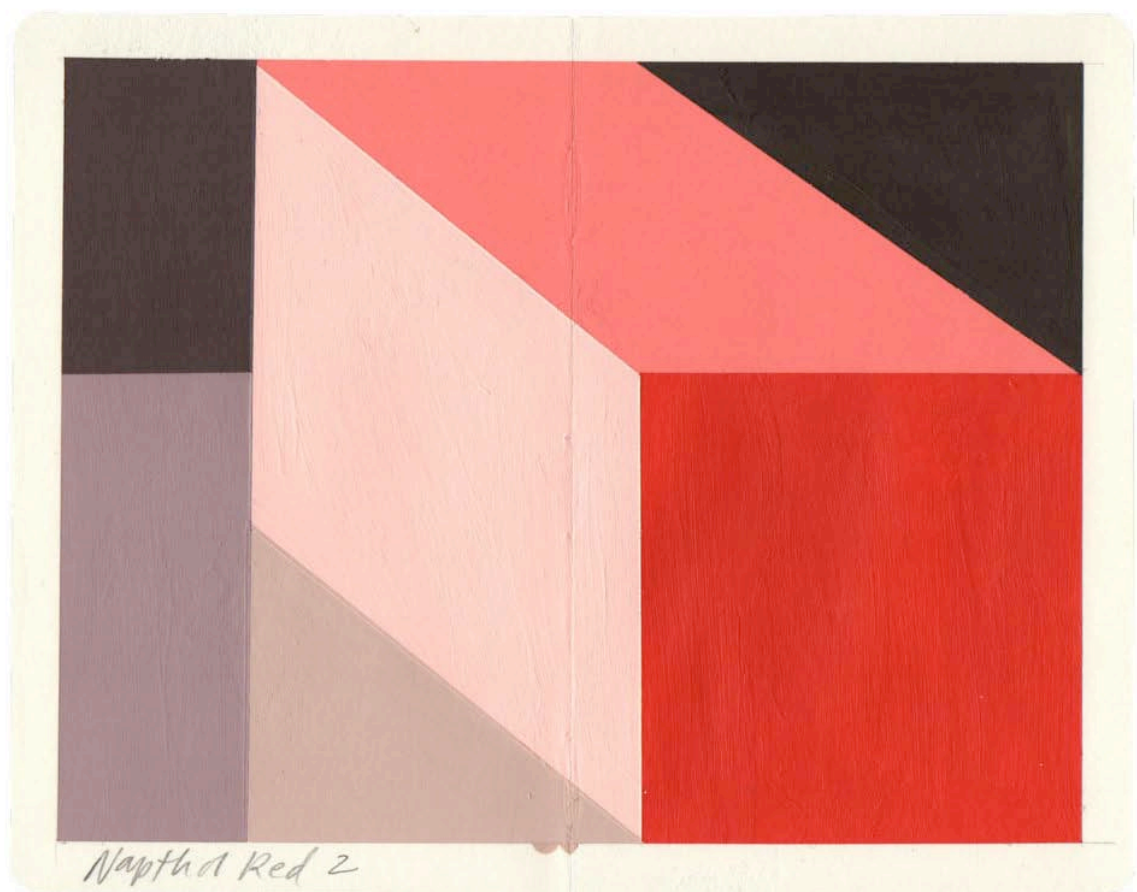
Color Study, Dioxazine Purple

\$350 | €300 | £265



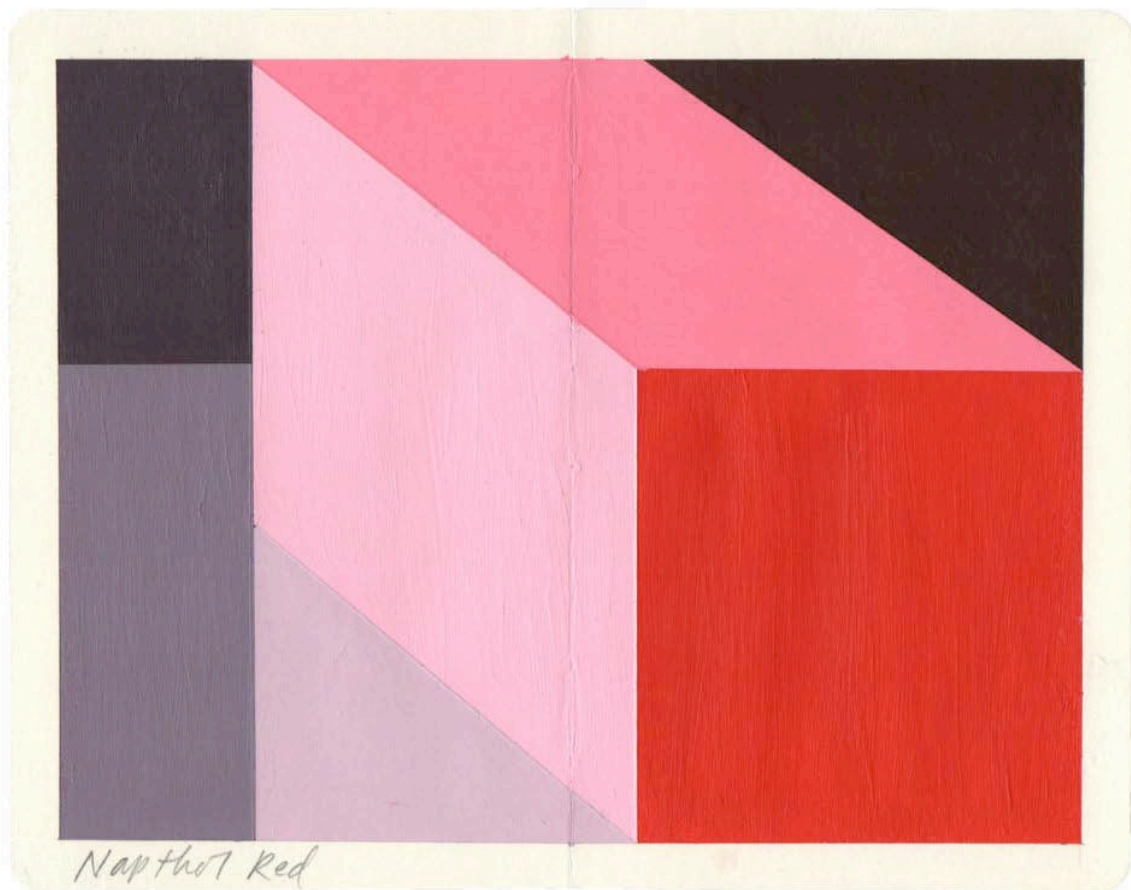
Color Study, Emerald Green

\$350 | €300 | £265



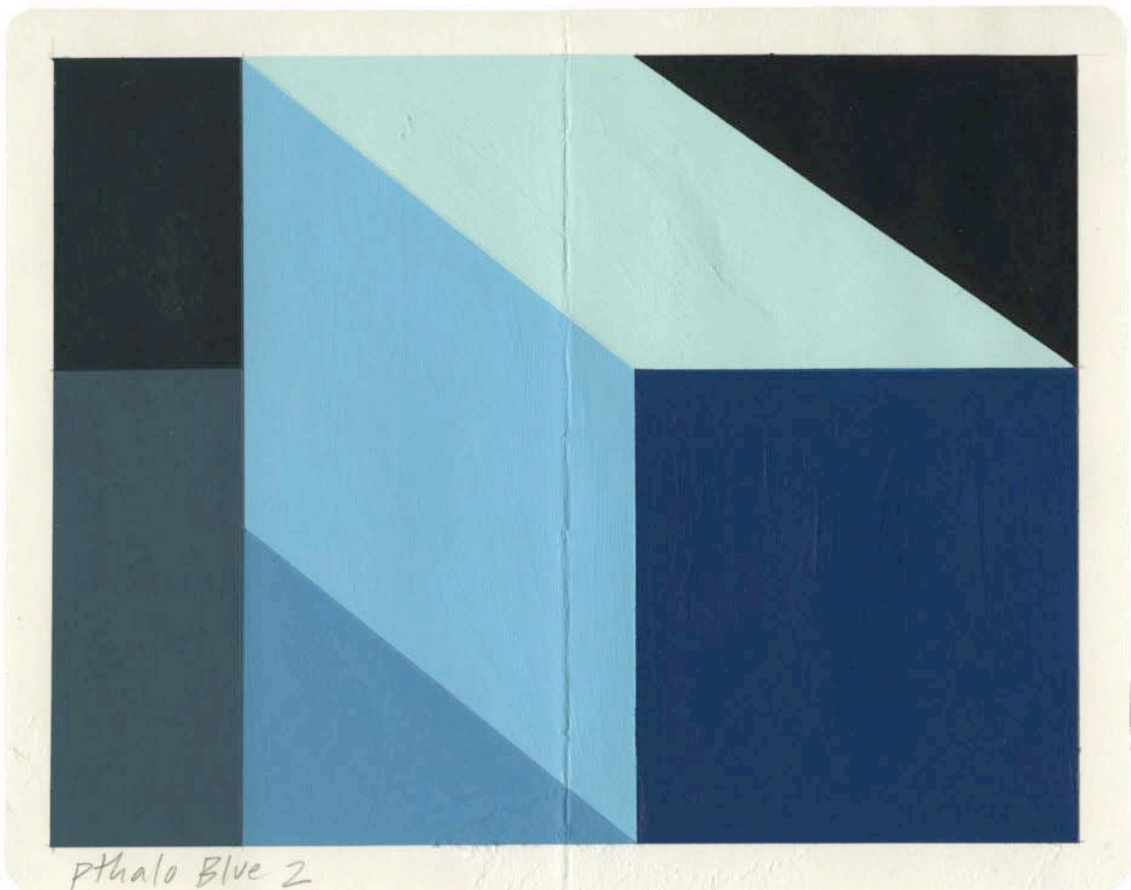
Color Study, Naphthol Red 2

\$350 | €300 | £265



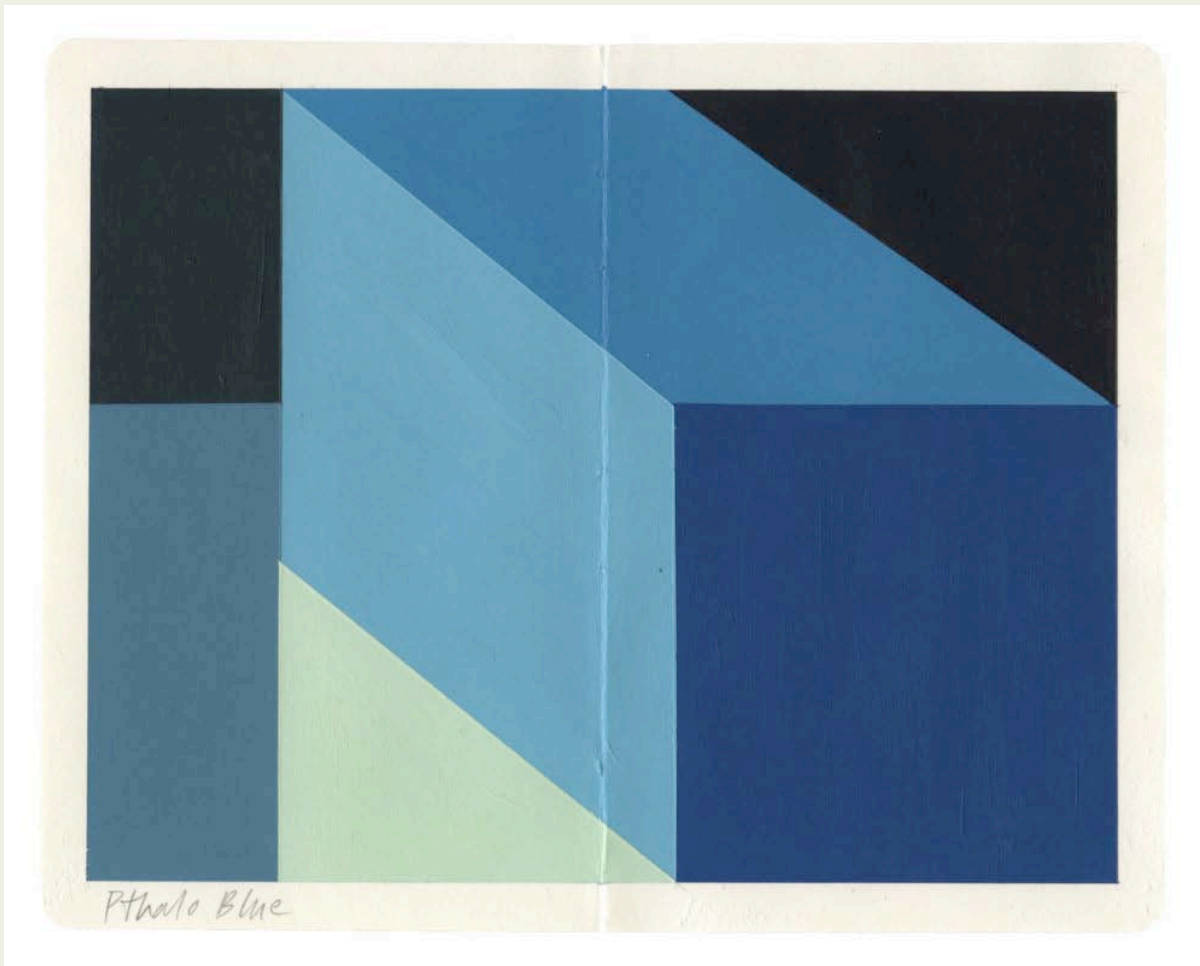
Color Study, Naphthol Red

\$350 | €300 | £265



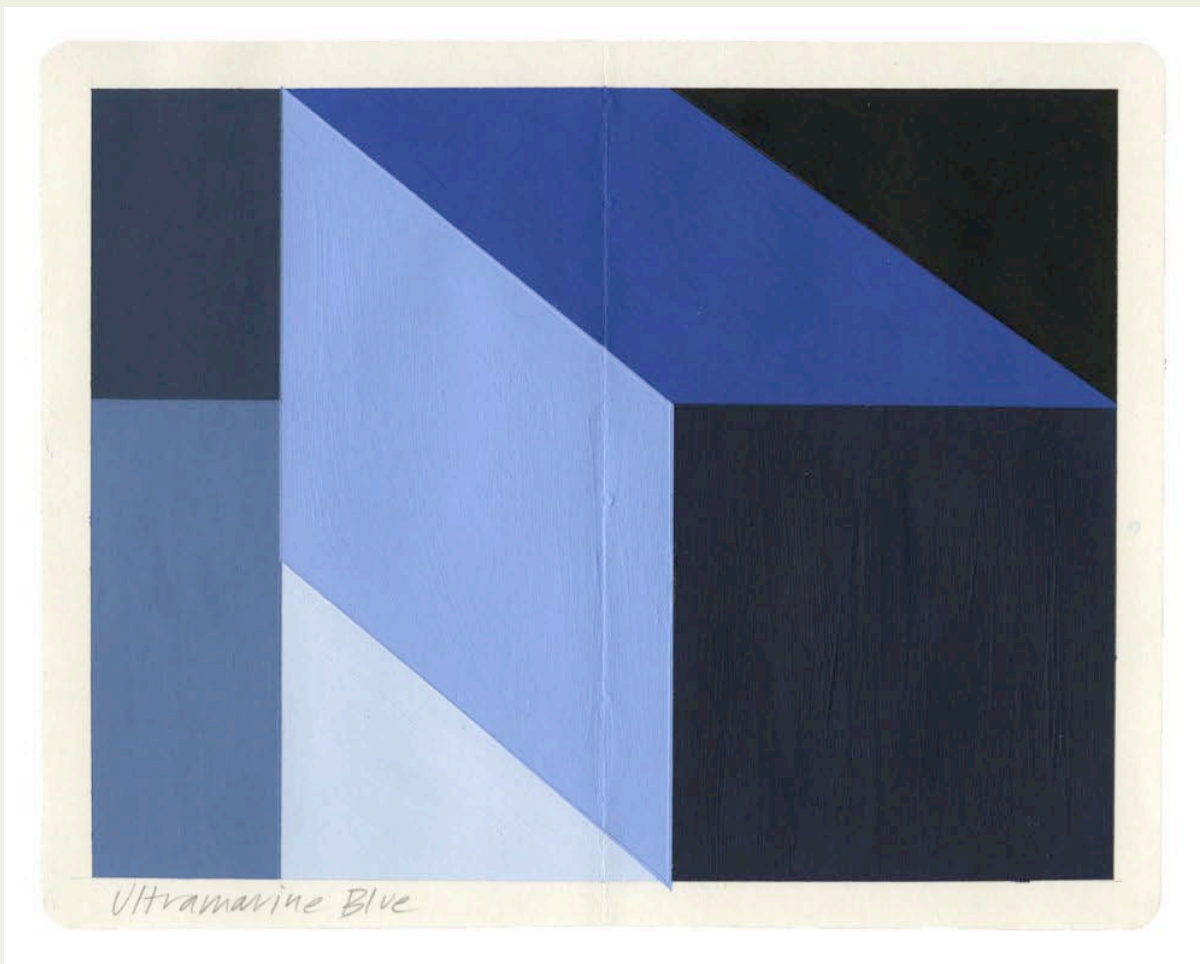
Color Study, Pthalo Blue 2

\$350 | €300 | £265



Color Study, Pthalo Blue

\$350 | €300 | £265



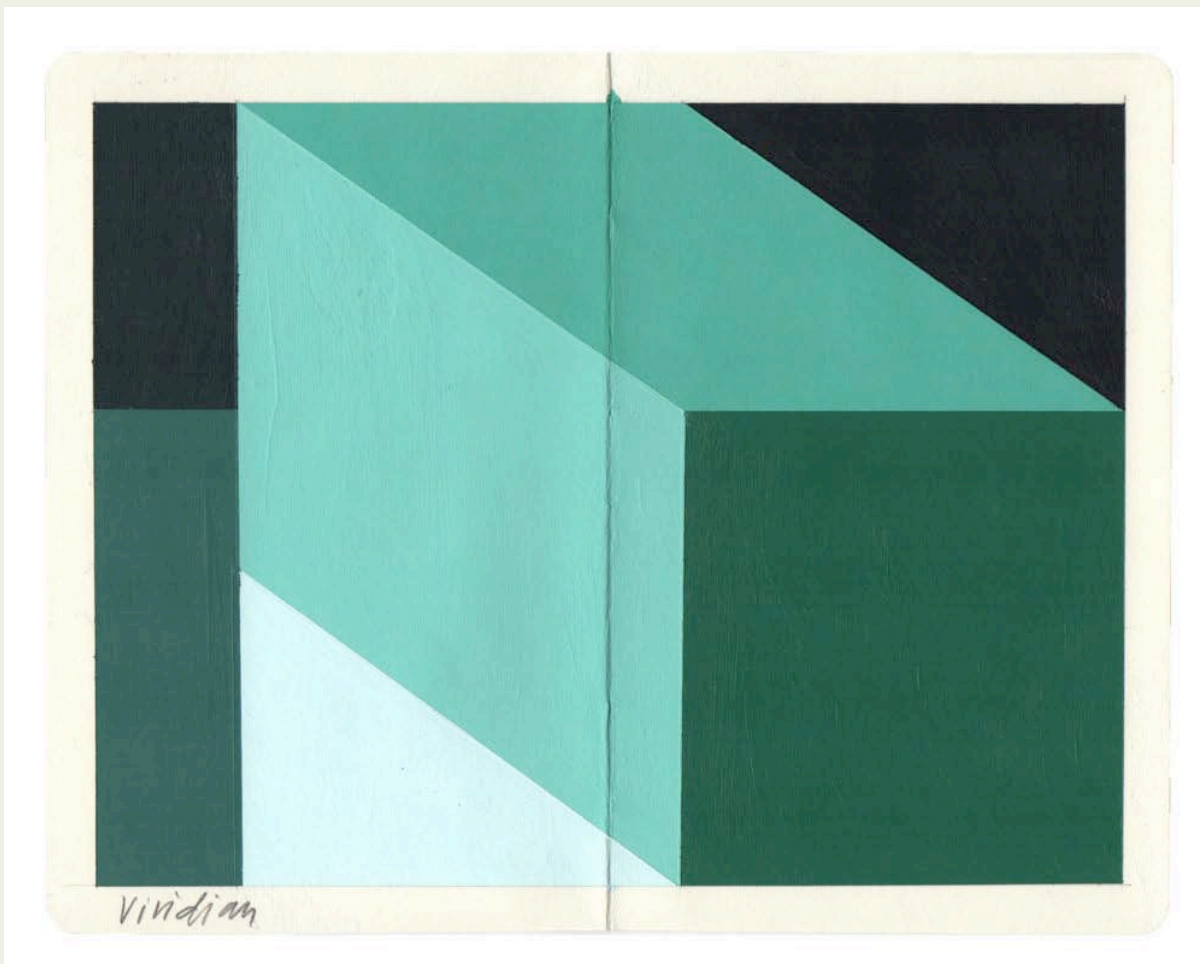
Color Study, Ultramarine Blue

\$350 | €300 | £265



Color Study, Viridian 2

\$350 | €300 | £265



Color Study, Viridian

\$350 | €300 | £265

For purchase inquiries please contact:

Hyland Mather
+31 62 915 1752
hydeyhodey@gmail.com

Work from the Correspondence exhibition will post at the conclusion of the exhibition.

All work will be shipped framed as displayed using fedex international economy with tracking number.

The prices in the catalogue contain all taxes associated with purchase. There is no special discount for purchases outside of the EU



andenken

PayPal

