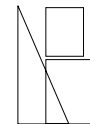




SCOTT ALBRECHT

HERE AND NOW

July 3rd –24th, 2015



Andenken / Battalion

Pazzanistraat 17, 1014 DB, Amsterdam, NL

Andenken Gallery is pleased to present *HERE AND NOW*, a solo exhibition of new works by Brooklyn-based artist Scott Albrecht, featuring a collection of works on paper, wood panel, and dimensional woodworks. The exhibition will be held at Battalion Amsterdam and will run from July 3rd–24th, 2015 with an opening reception on Friday, July 3rd, from 6–10pm.

HERE AND NOW showcases Scott's latest work which plays off of his graphic style of intricate typographic woodworks, colorful patterning and found object re-appropriation. In this collection the artist takes inspiration from recent events in his life that have resulted in larger shifts or change happening around him. The work is aimed to highlight these situations in varying degrees – from coping with the unforeseen, to recognizing the opportunities from what is available.

Scott says "this past year I've seen and thought a lot about bigger events that have happened with both myself, and the people around me. As I started to take note of some of these situations, this idea of change and shift was becoming more and more prevalent. The work in *HERE AND NOW* is really me taking these situations and processing them. Trying to understand how to deal or cope or even anticipate them in the future."

While change can be a somewhat scary unknown to some, Scott repeatedly tries to take the optimistic road of opportunity in a situation. The sentiments in his works are genuine, recognizing both the good and bad but ultimately focussed forward.

With a graphic design background, hand-drawn typography tends to play a larger role in his work, with both literal characters and abstracted. A new series of multi-layered woodworks, abstracts the letters into a series of bold, colorful, graphic shapes. At first glance these works appear to be an exercise in form, but within the shapes lie a grid of letters in disguised message. The largest in the series, "The Future is Forever" measures approximately 44" x 24", and is comprised of nearly 180 wooden shapes in varying depths, individually cut, sanded, painted and re-assembled.

Other works in the exhibition continue to act as an extension of Albrecht's growing graphic language. As part of an ongoing series, *HERE AND NOW* will also feature a selection of new woodworks and paper studies from his hand series. In this series, the works showcase an assortment of graphically stylized hands, each individually embellished representing various characteristics or personality types. Albrecht uses the hand as a canvas in this series with the simple idea that actions speak louder than words, and the hands being symbolic of a person's personal history. New to this series is a set of two hands titled "Companions" which is similarly crafted but incorporates two raised triangles on each hand that when put together locks the hands in place, creating a union.



THE FUTURE IS FOREVER

—

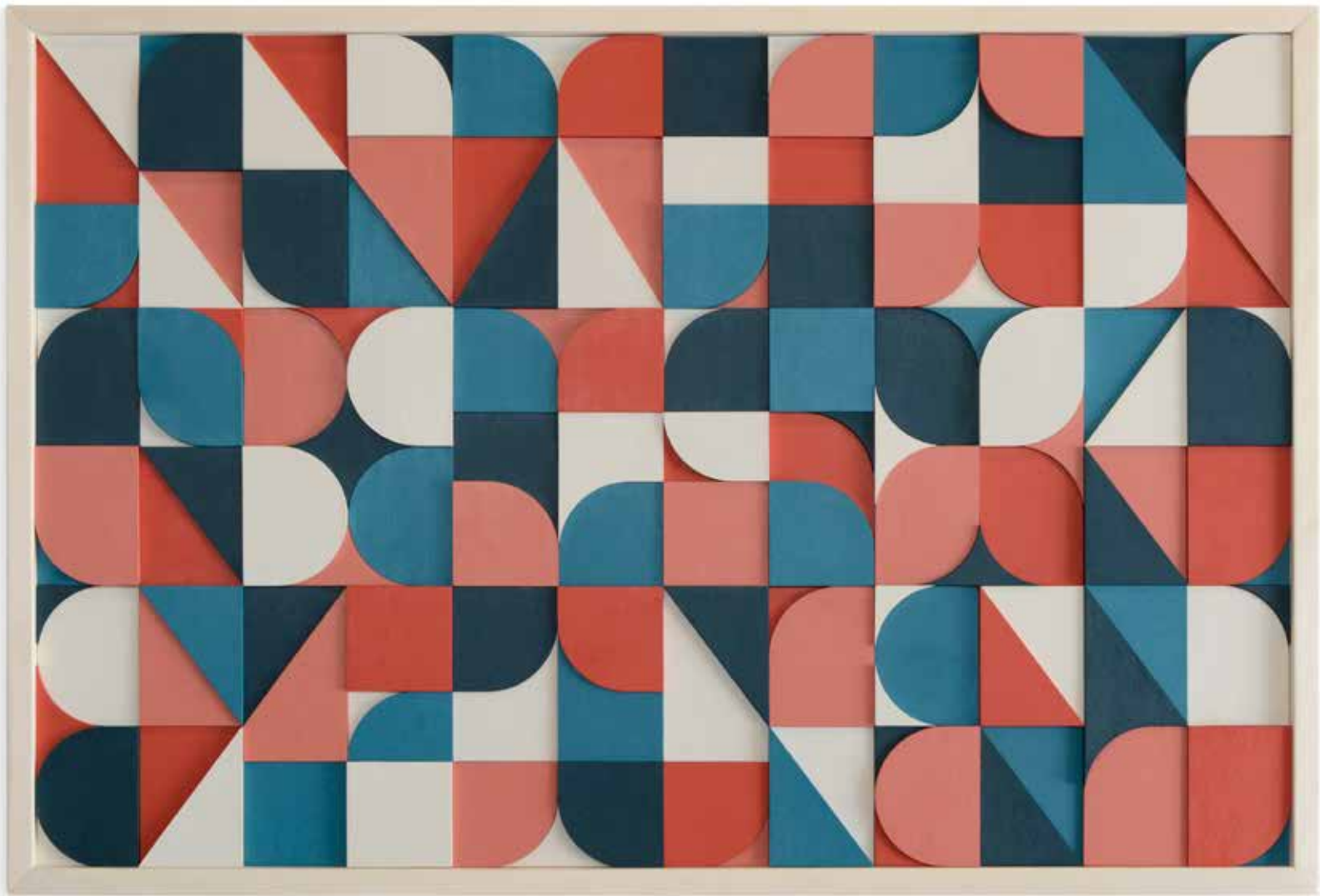
Acrylic on wood; hand-made aspen pine frame
106 x 62 x 4 cm

€2700 | \$3000 | £1915



With a graphic design background, hand-drawn typography tends to play a larger role in Scott's work, with both literal characters and abstracted. This new series of multi-layered woodworks, abstracts the letters into a series of bold, colorful, graphic shapes.

At first glance these works appear to be an exercise in form, but within the shapes lie a grid of letters in disguised message. The largest in the series, "The Future is Forever" measures approximately 44" x 24", and is comprised of nearly 180 wooden shapes in varying depths, individually cut, sanded, painted and re-assembled.



NOTHING IS DEFINED

—

Acrylic on wood; hand-made aspen pine frame

91.5 x 62 x 4 cm

€2500 | \$2775 | £1770





A NEW PERSPECTIVE

—

Acrylic on wood; hand-made aspen pine frame

77 x 62 x 4 cm

€2300 | \$2550 | £1630





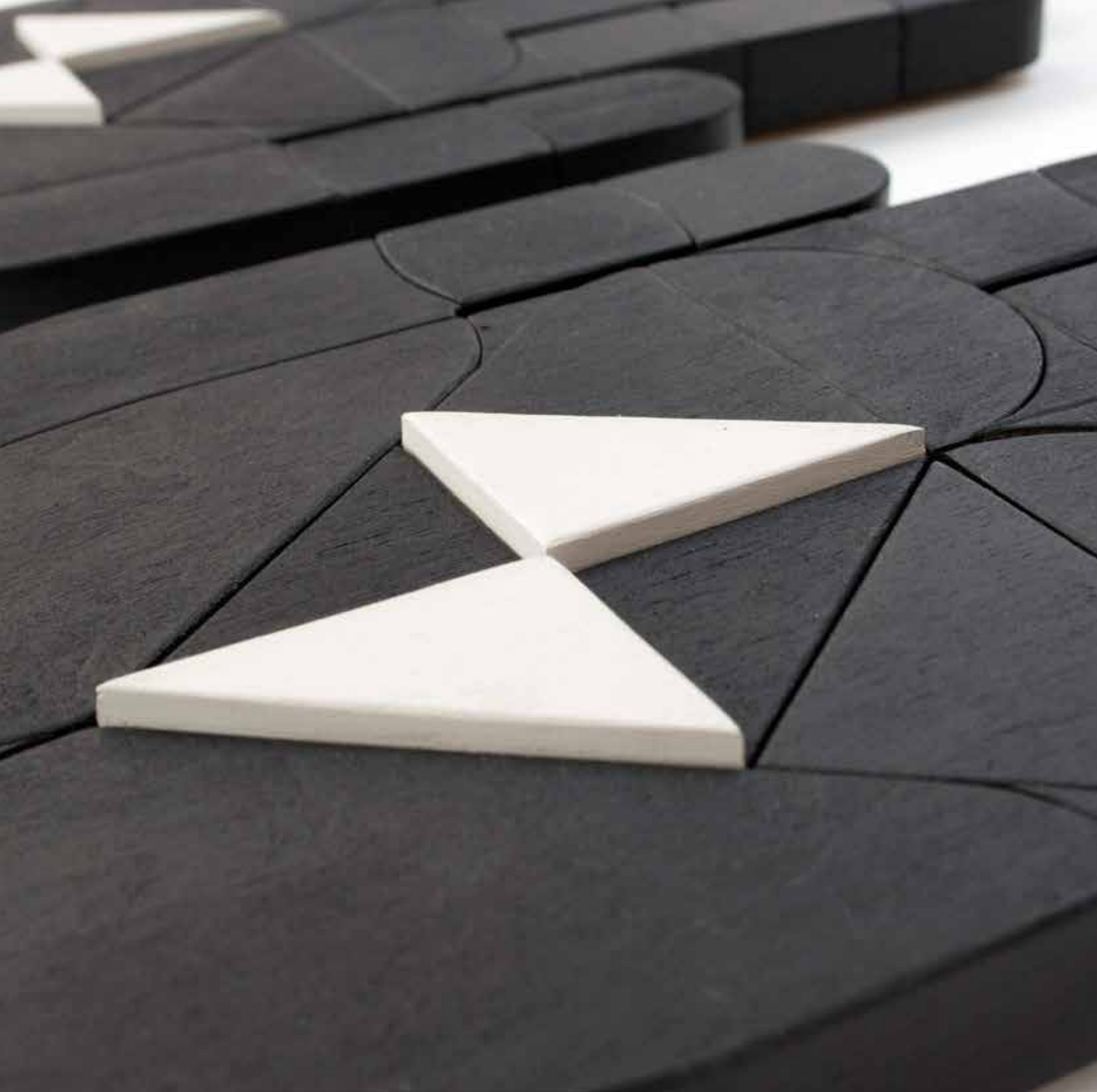
COMPANIONS (SET)

—

Acrylic on wood

26.5 x 16.5 x 2 cm

€1265 | \$1400 | £900



Scott's hands series features an assortment of graphically stylized hands, each individually embellished representing various characteristics or personality types. He uses the hand as a canvas in this series with the simple idea that actions speak louder than words, and the hands being symbolic of a person's personal history.

New to this series is a set of two hands titled "Companions" which is similarly crafted but incorporates two raised triangles on each hand that when put together locks the hands in place, creating a union.



INBETWEENER

—

Acrylic on wood

26.5 x 16.5 x 2 cm

€725 | \$800 | £515



EASY GOER

—

Acrylic on wood

27 x 16 x 2 cm

€725 | \$800 | £515



THE ADVENTURER

—

Acrylic on wood; No. 1 of edition of 3

26.5 x 14.5 x 2 cm

€450 | \$500 | £315



THE SUN ALWAYS RETURNS

—

Acrylic & ink on wood panel

30.5 x 40.5 x 2.5 cm

€320 | \$350 | £225



WE ARE HERE BEFORE WE ARE THERE

—

Gouache & ink on paper; white matte & white frame

20 x 27 cm

€300 | \$330 | £215



IT HOLDS A MOMENT FOR A LIFETIME

—

Gouache & ink on paper; white matte & white frame

20 x 27 cm

€300 | \$330 | £215



WHAT WE KNOW BEFORE WE KNOW IT

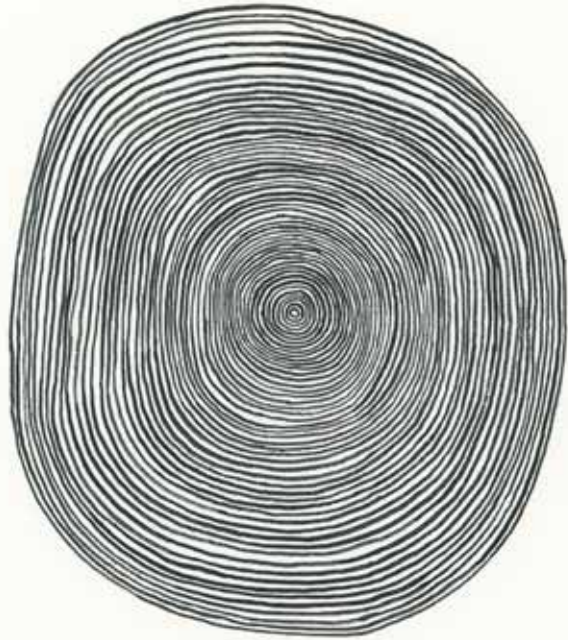
—

Gouache & ink on paper; white matte & white frame

20 x 27 cm

€300 | \$330 | £215





IT ECHOED BEFORE
IT WAS HEARD

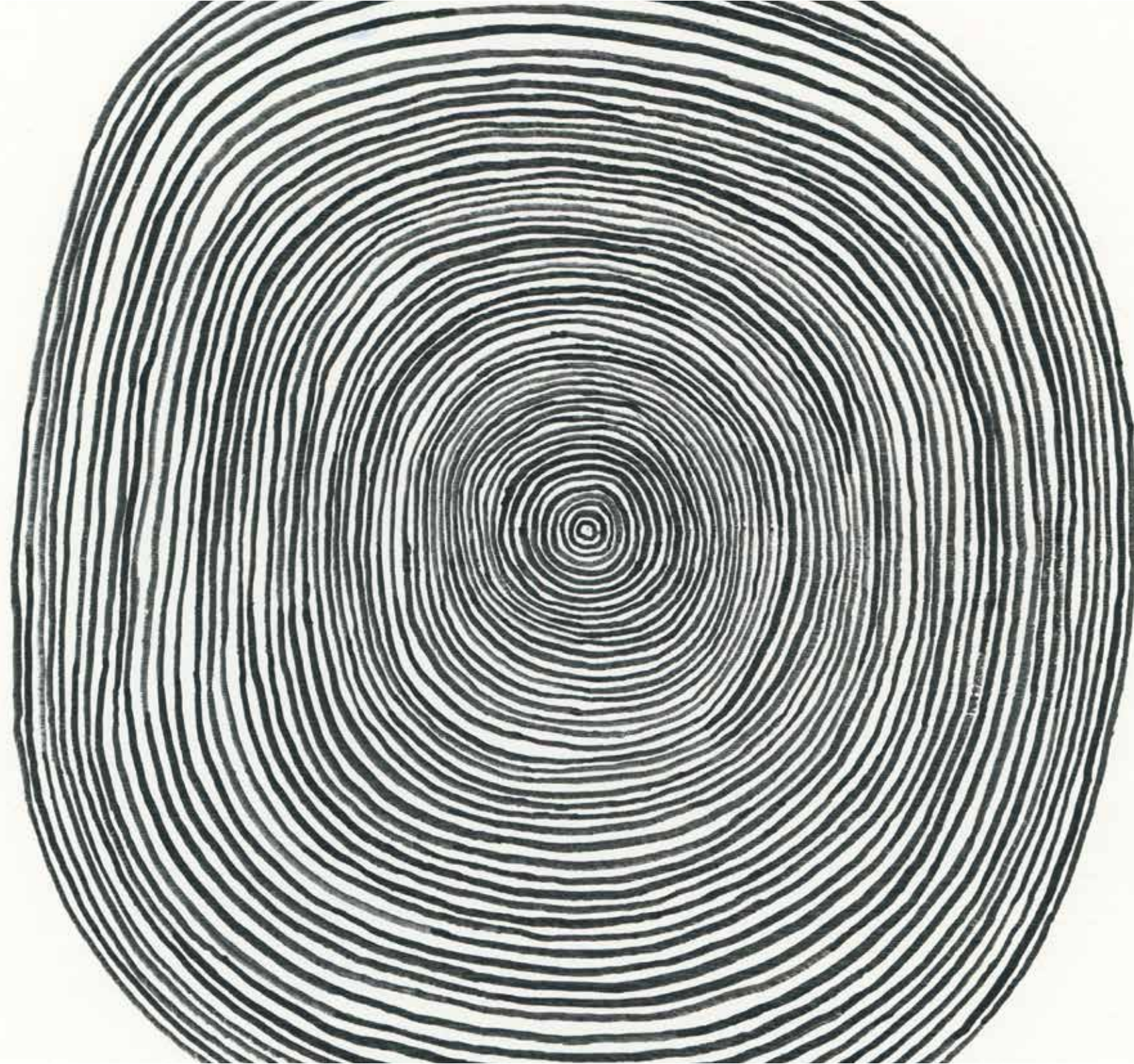
IT ECHOED BEFORE IT WAS HEARD

—

Acrylic & ink on wood panel

20.5 x 25.5 x 2.5 cm

€300 | \$330 | £215





THE UNLIMITED POTENTIAL
OF THE UNKNOWN

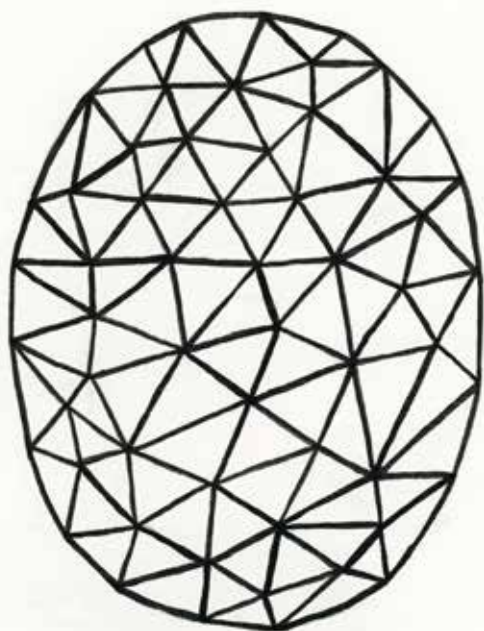
THE UNLIMITED POTENTIAL OF THE UNKNOWN

—

Acrylic gouache & ink on wood panel

20.5 x 25.5 x 2.5 cm

€300 | \$330 | £215



EVERYTHING BECOMES ONE

EVERYTHING BECOMES ONE

—

Acrylic gouache & ink on wood panel

20.5 x 25.5 x 2.5 cm

€300 | \$330 | £215



THE GUIDE

—

Ink on found paper; white matte & white frame

18 x 22.5 cm

€180 | \$200 | £125



HONEST

—

Ink on found paper; white matte & white frame

18 x 22.5 cm

€180 | \$200 | £125



DISHONEST

—

Ink on found paper; white matte & white frame

18 x 22.5 cm

€180 | \$200 | £125



COMPANION

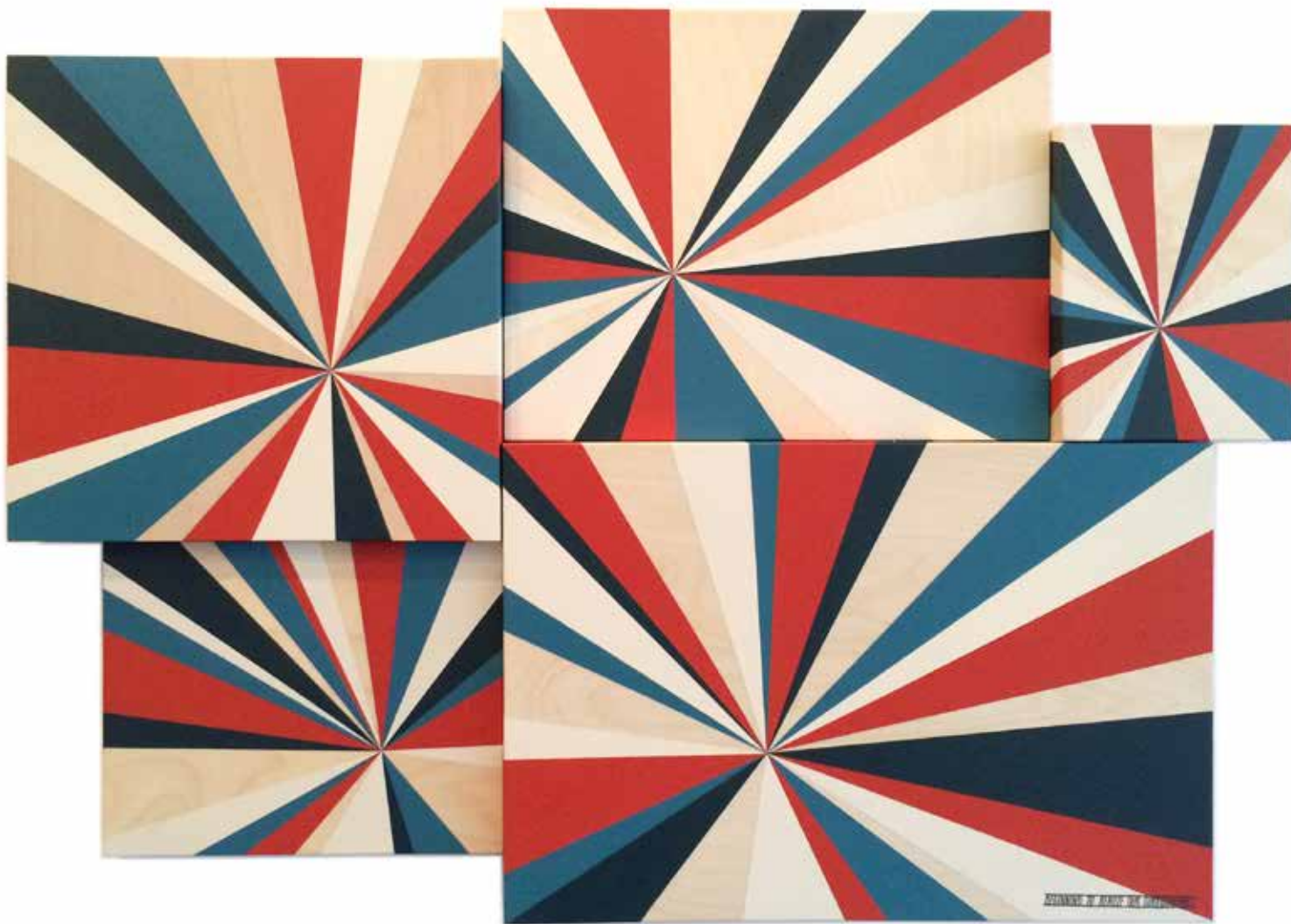
—

Ink on found paper; white matte & white frame

18 x 22.5 cm

€180 | \$200 | £125





BEGINNING TO REALIZE OUR SURROUNDINGS

—

Acrylic on varied wood panels

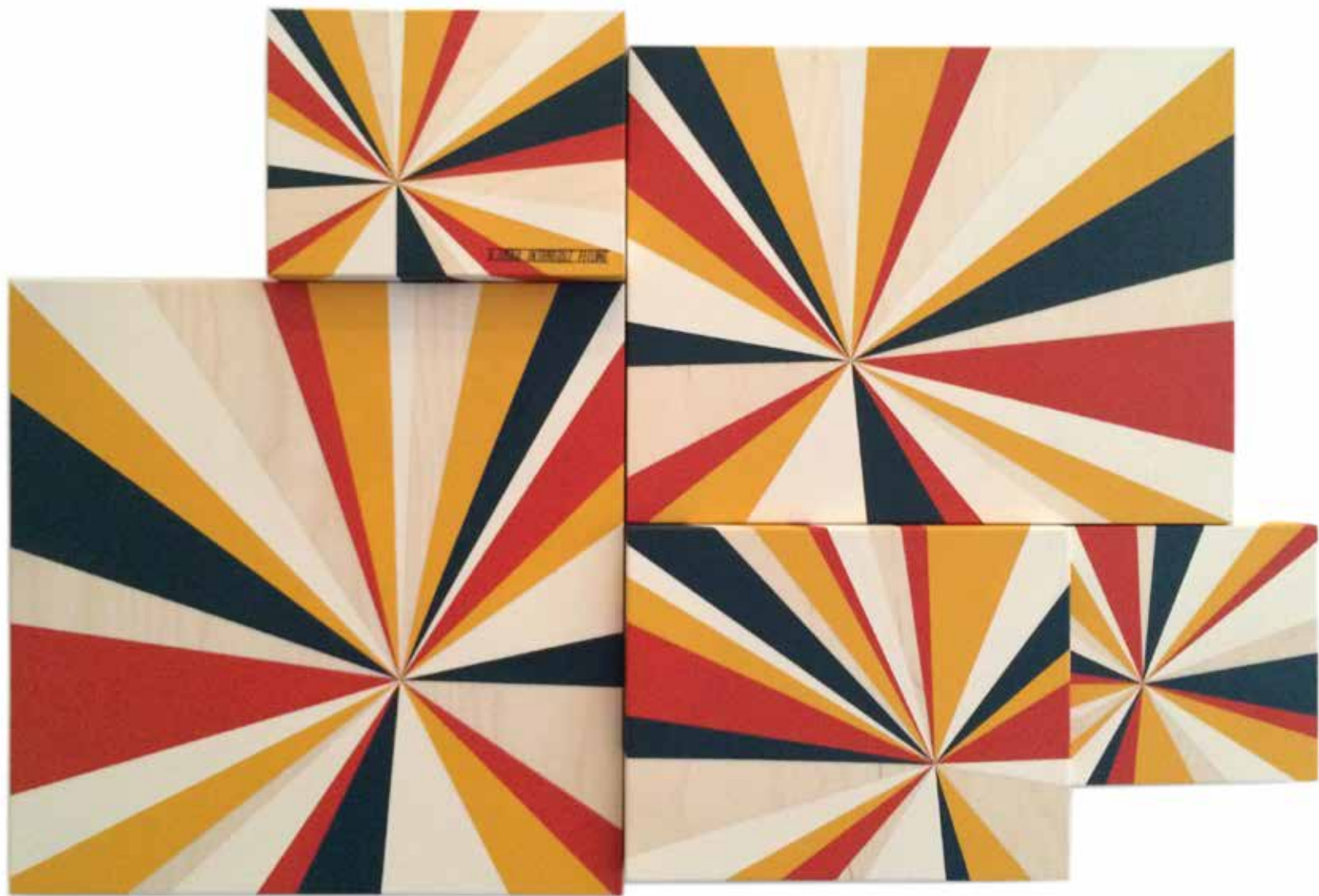
80.5 x 58 x 4.5 cm

€650 | \$720 | £460



A new series Scott is referring to as "Chain Reactions" features a cluster of brightly painted wood panels in varying sizes and depths.

As he explains, the bursts painted represent a series of events, all happening almost simultaneously, and playing off of one another inspired by the title of the work which is inscribed in the piece.



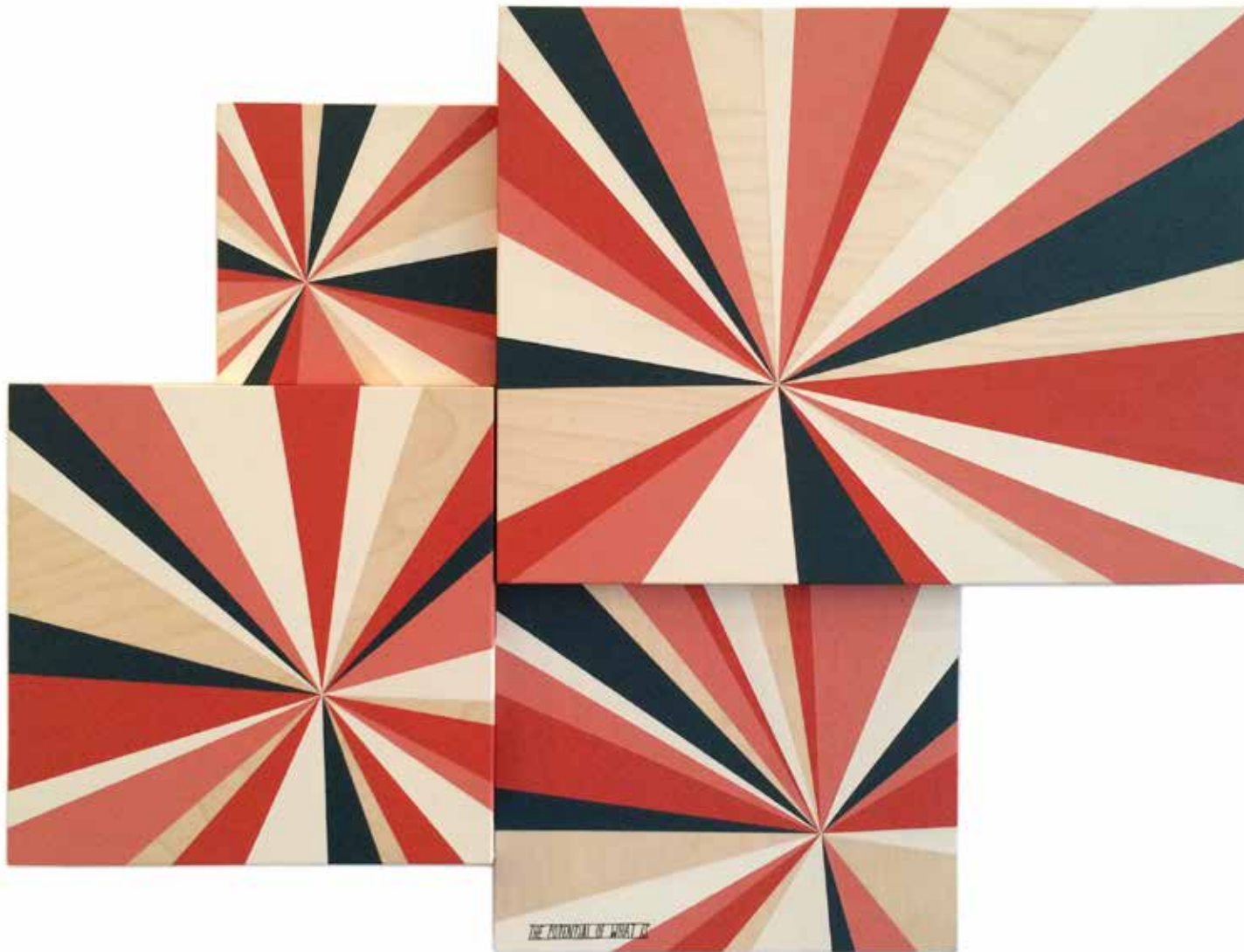
A SMALL INTANGIBLE FEELING

—

Acrylic on varied wood panels

76 x 51 x 4.5 cm

€650 | \$720 | £460



THE POTENTIAL OF WHAT IS

—

Acrylic on varied wood panels

66 x 51 x 4.5 cm

€650 | \$720 | £460



TRAVELLER

—

Acrylic on wood in found box; open edition

17.5 x 22 x 4.5 cm

€225 | \$250 | £160

ABOUT SCOTT ALBRECHT

Scott Albrecht was born in 1983 in New Brunswick, NJ, and raised in Bethlehem Township, NJ. In 2003, he received a degree in Graphic Design from The Art Institute of Philadelphia. Albrecht is currently based in Brooklyn, NY and a member of The Gowanus Studio Space. His work incorporates elements of woodworking, hand-drawn typography and geometric collage using vintage printed ephemera and found objects.

For more information, please visit
ScottyFiveAlive.com





ABOUT ANDENKEN GALLERY AMSTERDAM

Andenken has been involved in progressive contemporary art for more than 15 years. Started in 1997 by curator, and creator Hyland Mather, Andenken has had the foresight and the privilege of showing many culture shaping artists, including; Faile, Ben Eine, Kelsey Brookes, Evan Hecox, Jeremy Fish, Cody Hudson, Jim Houser, and Shepard Fairey among many others.

Exhibition Location:

Battalion Amsterdam

Pazzanistraat 17, 1014DB

Amsterdam, NL

For more information, please visit

Andenken.com



For direct purchase or press inquiries
please contact:

Hyland Mather

E: Hyland@Andenken.com

P: +31 62 915 1752

